

For Sale

Brand new 4 pt mooring system.

Build in Holland.
Available for sale in
Batam Shipyard.

Brand new 4 pt
mooring system.
Build in Holland.
Available for sale in
Batam Shipyard.

<u>Item</u>	<u>Description</u>	<u>Quantity</u>
Item 1	Electric Mooring Winch (Model: JJ-EMW-SD-50B100)	4 Sets
Item 2	Local Control Stand for EMW	4 Sets
Item 3	Remote Control Panel in Wheel House for EMW	1 Set
Item 4	FW Cooled Drag Brake for Mooring Winch	4 sets
Item 5	Load and Length Monitoring System for Mooring Winch (Model: JJ-LTMS/4S)	1 Lot
Item 6	Vertical Leading Sheave c/w Load Pins (Model: JJ-VLS-42)	4 Sets
Item 7	Vertical Leading Sheave (Model: JJ-VLS-42)	4 Sets
Item 8	Swivel Fairlead (Model: JJ-SFL-42)	4 Sets

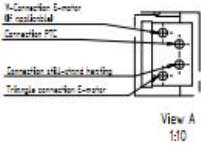
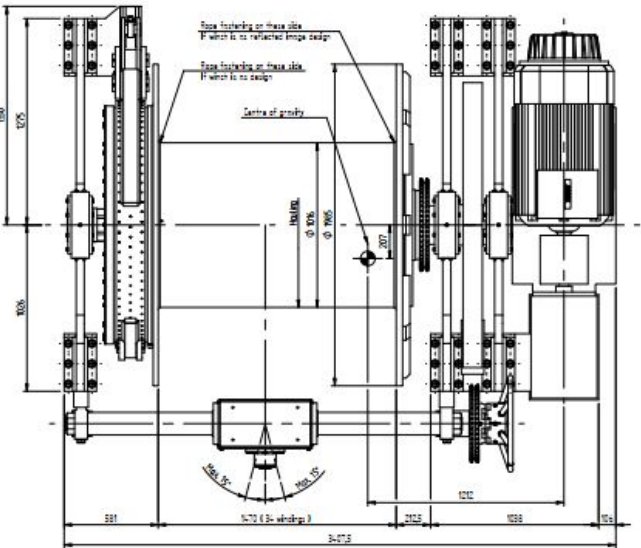


Specifications



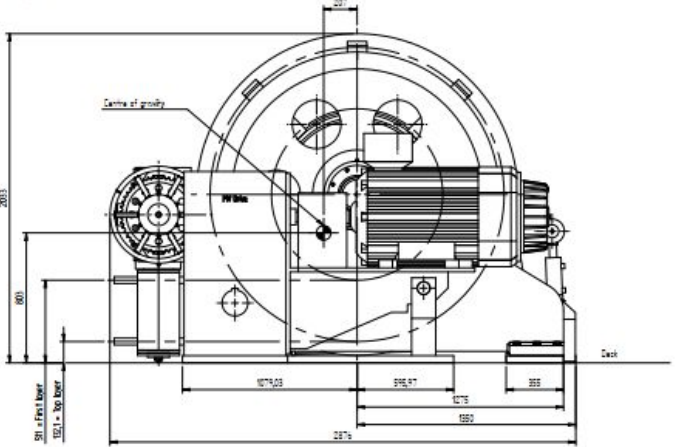
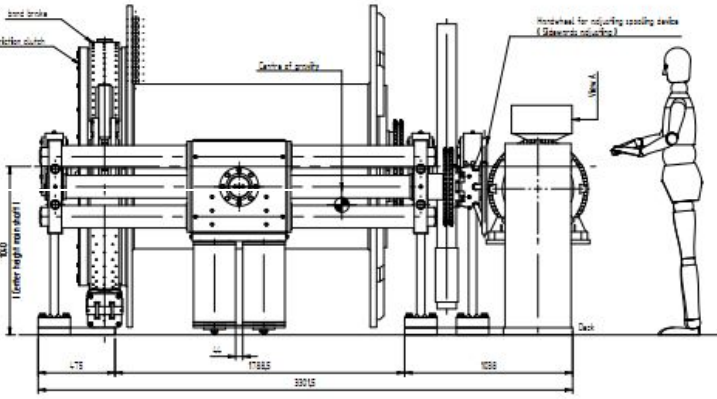
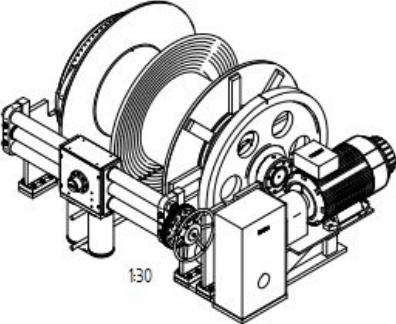


Specifications



- Anchor Drum :
- Wire Ø : 42 mm
 - F-nom : 400 kN
 - F-brake : 900 kN
 - NBL rope : 1125 kN
 - V-nom : 0 - 10 m/min
 - V-max : 0 - 30 m/min
 - Rope length : 1500 m
 - Rope layers : 10
 - Power : abt. 81 kW
60Hz - 440V
- Operating Winch : Local control stand
Bridge control panel
- Wire : Pre stretched ± 1%
Left hand lay

Working Layer	1	Calculation per layer					
		Flow speed m/min	Max. speed m/min	Flow Pull kN	Max. pull kN	Brake holding force kN	Pitch diameter mm
1	→	10,0	10,0	400,00	560,00	900,00	113,01
2	→	10,8	10,8	370,58	509,54	830,80	124,99
3	→	11,6	11,6	345,19	474,63	776,67	136,95
4	→	12,3	12,3	323,05	444,20	726,87	148,87
5	→	13,1	13,1	303,59	417,43	680,07	160,77
6	→	13,9	13,9	286,33	393,71	644,25	172,64
7	→	14,7	14,7	270,93	372,54	609,60	184,49
8	→	15,5	15,5	257,11	353,57	578,49	196,30
9	→	16,3	16,3	244,62	336,36	550,40	208,09
10	→	17,1	17,1	233,30	320,78	524,92	220,85



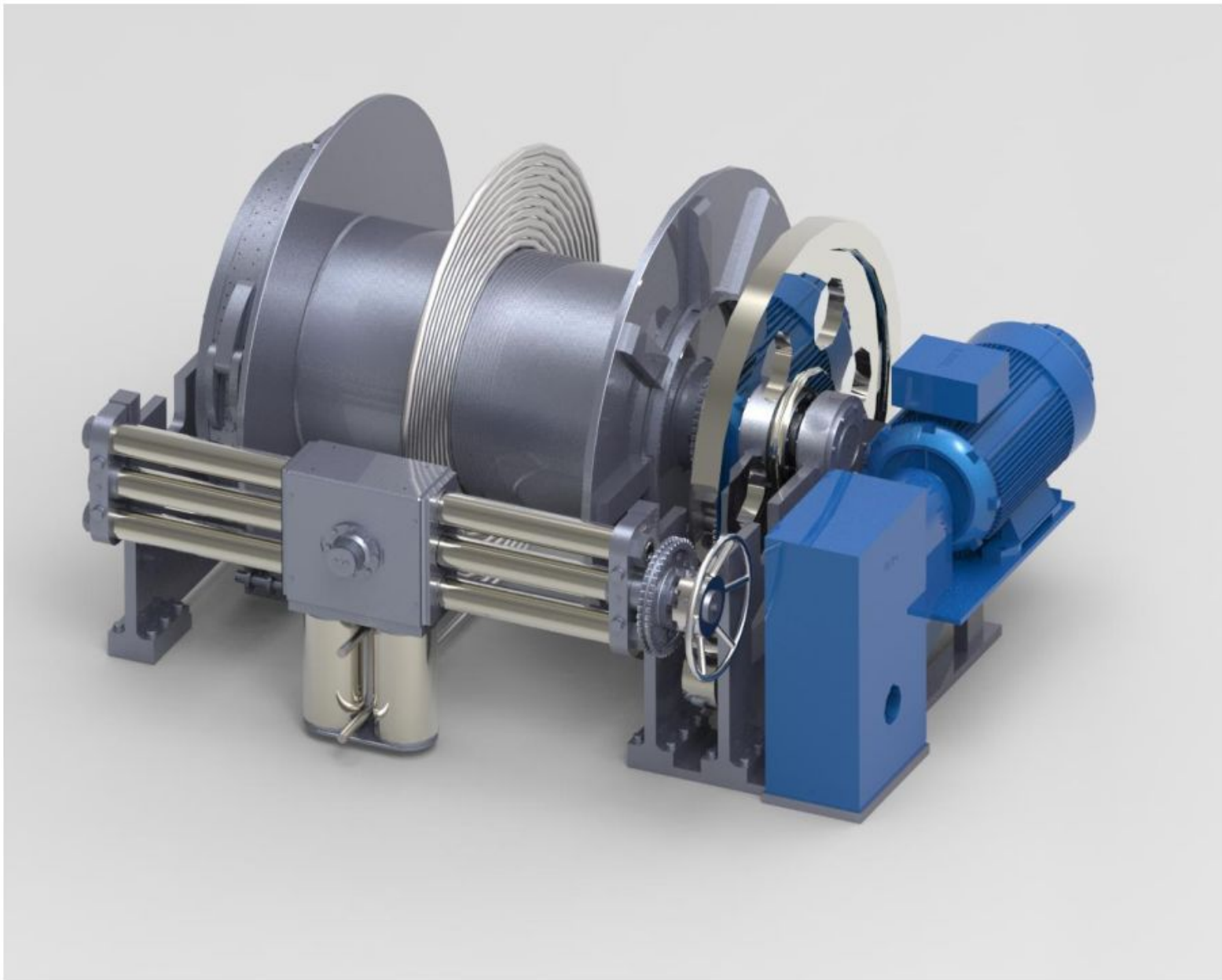
Total weight :
x A: design
x A: reflected image design
Series:
Order:

Remark: Centre of gravity, Taken in account weight of 1500 m steel wire.

No.	Norm.	Date	Subject	E.F. Anchor draad lier 400 kN	E.F. Anchor Drum Winch 400 kN
A	AE	30-05-2015	Drawn	AB	Check
B			Drawn	AB	Check
C			Drawn	AB	Check

Scale: 1:10
95081.0020.00.98
A2





Specifications



Specifications

Electric Anchor Drum Winch

Mechanical part

Anchor rope drum

The drum(s) is of a steel welded construction and runs on a bronze sliding bearing. It is declutchable and can be stopped by means of friction lined band brake. The brake lining is asbestos free and seawater resistant. The brake bolt and spindle are made of stainless steel, the brake rivets are of copper. The brake anchor is welded on the winch foundation. The wire will be connected to the drum by means of clips or a key.

Diameter drum	:	1016	mm
Length drum	:	1470	mm
Wire connection	:	top (Seen from bulwark)	
Nominal force 1st layer	:	400	kN
Drum brake holding force 1st layer	:	900	kN
Rope diameter	:	42	mm
Rope material	:	Steel wire	
Nom. rope speed 1st layer	:	0-10	m/min
Max. rope speed 1st layer	:	0-30	m/min
Rope length	:	1500	m
Rope layer(s)	:	10	
Security winding(s)	:	3	
Brake type	:	Friction lined brake	
Brake operation	:	Automatic (pneumatic) operated	
Clutch type	:	Friction clutch	
Clutch operation	:	Automatic (pneumatic) operated	
Nos. of drum(s)	:	1	piece(s)

Electric motor

The electromotor is mounted from the outside to the PIV-drive with a flange connection. The electromotor is conform the specific requirements for operation at ship's, indicated by the insulation class F and the protection IP 56.

For temperature differences and humidity conditions, the motor has standard an anti-condensation heater. For the protection against overheating, the motor for the anchor winches is equipped with a PTC, whereas the other motors will be protected by means of a thermistor, built-in in the starter box. Special consideration is also made for the voltage drop on board of vessels; the standard 6% voltage drop for a generator set is taken into account. The motor is equipped with a disc brake.

Producer	:	ABB or equivalent
Type	:	TENV, Frequency controlled
Form	:	B5, AC
Insulation class	:	F
Rated power	:	abt. 81 kW
Duty	:	S1, continuous operation
Voltage/Frequency	:	440/60 V/Hz
Calculated V-drop	:	abt. 6%
Protection	:	IP 56
Still-stand heating	:	yes
Disk brake	:	yes

Control system

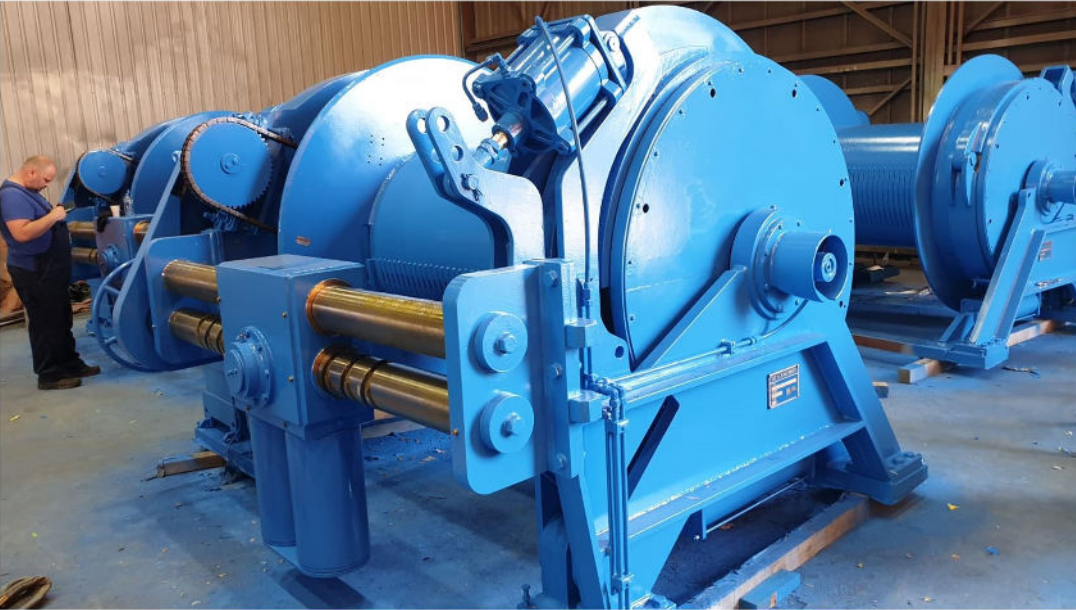
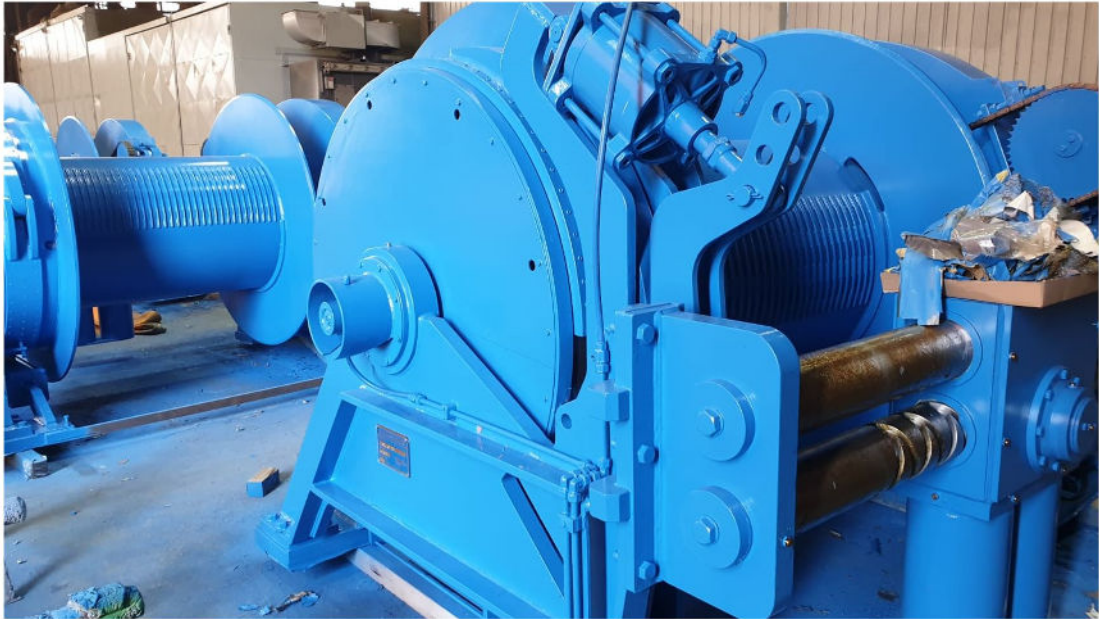
Operation of the winch is achieved through a local and bridge mounted controller. The local controller has to be installed closed to the winch, is ready for deck-mounting and has a protection of IP 56. The bridge mounted controller will come in a panel that contains the controllers for all 4 winches.

Frequency control	:	IP 55
Number of Frequency control	:	1 piece
Operating system	:	
Master switch	:	100%-0-100%
Protection master switch	:	IP 56
No. of master switches	:	2 pieces. One for local control and one for control from the wheelhouse desk.
Start/Emergency stop	:	Included
Light for indication	:	Ready for use, failure
Anti condensation heater	:	Included
Bridge panel	:	Included
Emergency quick release	:	Included
Length cable counter	:	Included, on bridge



FOR SALE

VA Group



Gallery



Gallery



D. LAMPRIDIS

FOR SALE

Interested? Contact Us

email: **dlampridis@voeurope.com**

tel: **0030 6936 978 585**

contact

Follow me in **LinkedIn** >

OFFICE HOURS

Monday – Saturday
09.00 – 18.00

CONTACT DETAILS

email: dlampridis@voeurope.com
tel: 0030 6936 978 585

D. Lampridis

Provide **Feedback** >

