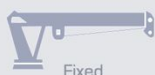


THE FOLDABLE TELESCOPIC CRANES EXPERTS



Exclusive Agents in Greece & Cyprus



Fixed



Telescopic



Knuckle - Telescopic



Fully foldable



Knuckle



Truck

Power | Passion | Partnership



Our cranes are synonymous with safety, soundness, compactness, light weight and low operation costs.

HEILA CRANES GROUP:

Heila Cranes SpA in Italy
Heila Cranes Nederland BV in The Netherlands

HIGHLIGHTS:

- ▶ Over 45 years of experience
- ▶ Over 5,500 marine cranes engineered and manufactured
- ▶ 220 cranes certified by class in the recent years
- ▶ Outstanding in-house engineering capability



Focus on our customer

Heila cranes focuses on establishing long-term relationships with its customers, proactiveness, and technical reliability. With energy and passion. In practice this means engineering and manufacturing the most reliable custom-built marine and offshore cranes, with capacities ranging from 3 up to 1,500 tm. Always in cooperation with our customers. Always striving to find the best solution.

MISSION

We supply the most reliable cranes to our customers in the marine and offshore industry. We aim to satisfy their every need with respect to deck cranes among our range.

"Quality, reliability and service are Heila's unique selling points. The company has gathered together a group of true professionals who are reliable and skilled"

Neptune Shipyard BV

"We prefer quality cranes for our vessels and value at the same time a good understanding and relationship with our suppliers. No problem for Heila: our long-term cooperation with Heila proves this. The new Heila will emerge"

Damen Shipyards, Hardinxveld

FOUNDED IN ITALY, WITH WORLDWIDE PRESENCE

Heila Cranes has service, sales and dealer hubs throughout the world. This makes it possible to provide our customers with an optimal service. Check our website for a Heila representative in your area.





A



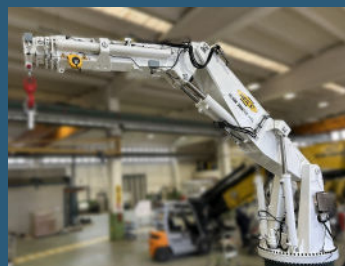
HLM CRANES
From 500 Kg to 4.7 tons
From 3 to 14 meters



B



HLRM CRANES
25 to 90
From 880 Kg to 17.07 tons
From 4 to 21 meters



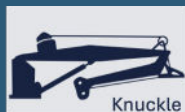
C



HLRM CRANES
80 to 1500
From 4.4 to 83 tons
From 5 to 29 meters



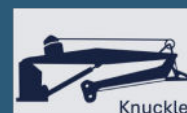
D



HR650/20-2BJ
From 4.6 to 25 tons
From 4.5 to 19.5 meters



E



HR850/20-2BJ
From 3.8 to 38 tons
From 4 to 24.5 meters



A HLM CRANES: Fully foldable telescopic cranes with rack and pinion slewing system



HLM 25/35

The HLM cranes with their rack and pinion slewing system are very compact and light. This makes the HLM type ideal for use on small vessels, especially where space is limited. Cranes of this type, our 'workhorses of the sea', are indispensable for auxiliary vessels including multifunctional work boats, tugs and pontoons.

CHARACTERISTICS

- The crane is able to work in any configuration; with boom extended upwards or folded downwards offering great manoeuvrability
- Rotation up to 360°. This is possible because the crane is fitted with a double rack and pinion system with bronze bushes that guarantees safe operation, even at higher heel and trim angles.

CONTROL AND SAFETY

- Stationary fixed control console
- Counterbalance valves directly mounted on each cylinder provide a fast response
- Proportional Electrohydraulic Control Valve Block with internal compensation for simultaneous movements and self-centring manual levers; supplied by primary world-wide producers
- Electrohydraulic load moment limiting device; prevents the crane being overloaded and damaged.

STRONG AND RELIABLE

Doubling the number of racks and cylinders doubles the power of the slewing system. Moreover, the life of these components is extended because the load is shared.

CUSTOMISATION

The HLM crane series is standardised, however, there are a surprising number of options allowing a full customisation.

HORIZONTAL LOAD HLM CRANES

Crane model	nr of extensions	Length of boom (m) and crane lifting capacity (kg)												HEILA Cranes STANDARD Products Table		Revision – 1 Juni 2024	
		3 m	4 m	5 m	6 m	7 m	8 m	9 m	10 m	11 m	12 m	13 m	14 m				
HLM 3	1 S	m	3,51		5,18												
		Kg	1,110		750												
	2 S	m	3,62		5,29	6,96											
		Kg	1,030		680	500											
HLM 6	1 S	m	3,54		5,25												
		Kg	1,710		1,160												
	2 S	m	3,66		5,33		7,00										
		Kg	1,460		1,000		760										
	3 S	m	3,60		5,24	6,88	8,62										
		Kg	1,390		910	670	530										
HLM 8	1 S	m	4,17	5,82													
		Kg	2,330	1,680													
	2 S	m	4,25	5,85		7,43											
		Kg	2,110	1,520		1,200											
	3 S	m	4,34	5,96				9,27									
		Kg	1,780	1,250			950		770								
HLM 10	1 S	m	4,64		6,54												
		Kg	2,310		1,650												
	2 S	m	4,69		6,55		8,41										
		Kg	2,280		1,620		1,260										
	3 S	m	4,80		6,65		8,51			10,30							
		Kg	2,120		1,440		1,140			940							
HLM 16	1 S	m	4,94		6,94												
		Kg	3,440		2,460												
	2 S	m	4,96			7,02		9,03									
		Kg	3,350			2,190		1810									
	3 S	m		5,01		7,01		9,01			11,00						
		Kg		3,090		2,150		1,640			1,330						
HLM 25	2 S	m	4,68			6,65		8,62									
		Kg	5,170			3,640		2,820									
	3 S	m	4,81			6,76		8,73			10,58						
		Kg	4,940			3,470		2,660			2,200						
	4 S	m	4,94			6,89		8,86			10,72		12,64				
		Kg	4,700			3,280		2,490			2,020		1,710				
	5 S	m		5,04		6,99		8,96					12,82				
		Kg		4,520		3,100		2,320					1,450	14,72			



Data in de table are for harbour conditions

Horizontal loads, lifting by hook in harbour conditions. For the minimum outreach, please check the technical data sheet. HLM cranes can also work offshore.

Features:

- Originally designed for a marine environment
- One [1] cylinder for multiple telescopic movements
- Designed for easy maintenance
- High degree of customisation
- Cranes equipped with winch is possible, please contact our sales department



B HLRM CRANES (HLRM25 to HLRM 90): Fully foldable telescopic cranes with slewing bearing system



Crane model	nr of extensions	Length of boom (m) and crane lifting capacity (kg)																					HEILA Cranes STANDARD Products Table											Revision - 1 Juni 2024								
		4m	5m	6m	7m	8m	9m	10m	11m	12m	13m	14m	15m	16m	17m	18m	19m	20m	21m																							
HLRM 25	2S	m	4.68		6.65		8.62																																			
		Kg	5,170		3,640		2,820																																			
	3S	m	4.81		6.67		8.73		10.58																																	
		Kg	4,940		3,470		2,680		2,200																																	
	4S	m	4.94		6.89		8.86		10.72		12.64																															
		Kg	4,700		3,280		2,490		2,080		1,710																															
5S	m		5.05	6.99		8.96		10.82		12.82		14.72																														
	Kg		4,520	3,100		2,320		1,850		1,450		1,200																														
HLRM 25	2S	m	4.55		6.3		8.15																																			
		Kg	6,150		4,420		3,200																																			
	3S	m	4.68		6.43		8.28		10.23																																	
		Kg	5,800		4,100		3,100		2,400																																	
	4S	m	4.8		6.55		8.4		10.35		12.4																															
		Kg	5,560		3,850		2,900		2,200		1,730																															
5S	m	4.92		6.67		8.52		10.47		12.52		14.63																														
	Kg	5,250		3,650		2,680		1,910		1,460		1,190																														
6S	m		5.03	6.78		8.63		10.58		12.63		14.74		16.9																												
	Kg		5,000	3,400		2,400		1,750		1,320		1,050		880																												
HLRM 35	2S	m	5.21		7.18		9.15																																			
		Kg	5,780		4,170		3,270																																			
	3S	m	5.31		7.26		9.22		11.08																																	
		Kg	5,480		3,940		3,050		2,520																																	
	3SL	m	5.60		7.80		10.01		12.21																																	
		Kg	5,150		3,600		2,750		2,240																																	
4S	m	5.41		7.36		9.33		11.18		13.1																																
	Kg	5,320		3,800		2,930		2,370		2,010																																
5S	m	5.51		7.46		9.43		11.28		13.3		15.18																														
	Kg	5,150		3,670		2,820		2,300		1,900		1,610																														
5-SL	m	5.52		7.72		9.93		12.13		14.33		16.49																														
	Kg		5,010		3,410		2,540		2,100		1,600		1,330																													
HLRM 45	2S	m	4.89		6.86		8.83																																			
		Kg	8,210		5,870		4,570																																			
	3S	m		5.02	6.97		8.93		10.79																																	
		Kg		7,740	5,490		4,220		3,470																																	
	4S	m		5.14		7.09		9.05		10.91		12.83																														
		Kg		7,580		5,410		4,170		3,250																																
5S	m		5.23		7.18		9.15		11.01		13.01		14.91																													
	Kg		7,290		5,170		3,790		2,880		2,250		1,880																													
5SL	m		5.47		7.67		9.88		12.08		14.10		16.08																													
	Kg		6,710		4,570		3,170		2,300		1,830		1,520																													



Data in the table are for harbour conditions

Horizontal loads, lifting by hook in harbour conditions
For the minimum outreach, please check the technical data sheet.

Features:

- Originally designed for a marine environment
- Continuous slewing
- Designed for easy maintenance
- High grade of customisation
- Cranes equipped with winch is possible, please contact our sales department



Crane model	nr of extensions	Length of boom (m) and crane lifting capacity [kg]																			HEILA Cranes STANDARD Products Table											Revision – 1 Juni 2024																																																																																																																																																																																																																																																																																																																																																																																																																																																																																																																																																																																																																																																																																																																																																																																																																																																																																																																																																																																																																																																																																																																																																																																																																																																																																																																																																																																																																																																																																																																																																																																																																																																																																																																																																																																
		4m	5m	6m	7m	8m	9m	10m	11m	12m	13m	14m	15m	16m	17m	18m	19m	20m	21m																																																																																																																																																																																																																																																																																																																																																																																																																																																																																																																																																																																																																																																																																																																																																																																																																																																																																																																																																																																																																																																																																																																																																																																																																																																																																																																																																																																																																																																																																																																																																																																																																																																																																																																																																																																													

C HLRM CRANES (HLRM80 to HLRM 1500): Foldable Knuckle telescopic cranes with slewing bearing system



Crane model	nr of extensions	Length of boom (m) and crane lifting capacity (kg) HEILA Cranes STANDARD Products Table																							
		5m	6m	7m	8m	9m	10m	11m	12m	13m	14m	15m	16m	17m	18m	19m	20m	21m	22m	23m	24m				
HLRM 80	2S	m	6.13		8.13		10.13																		
		Kg	15040		11430		8350																		
	3S	m	6.32		8.32		10.32		12.32																
		Kg	14450		11020		7910		6180																
	4S	m	6.55		8.55		10.55		12.55		14.55														
		Kg	13310		10070		7180		5530		4490														
HLRM 120	2S	m	8.09		8.09		10.09																		
		Kg	19170		14400		11540																		
	3S	m	8.11		8.11		10.11		12.11																
		Kg	18870		14120		10880		8410																
	4S	m	8.3		8.3		10.3		12.3		14.3														
		Kg	18040		13500		10720		8260		6730														
	3SL	m		7.95			10.1		12.66			15.21													
		Kg		14670			10680		7960		6090														
	4SL	m		7.76			10.31		12.87			15.42			18.07										
		Kg		13960			10110		7430		5610			4480											
HLRM 140	3S	m	5.68		7.85		10.02		12.18																
		Kg	25030		18380			13270		10320															
	4S	m	5.87			8.04		10.21		12.37		14.42													
		Kg	23130			17030		12220		9480		7850													
	5S	m	6.19			8.26		10.33		12.4		14.52		16.74											
		Kg	21170			15680		12360		10170		8360		7020											
	6S	m	6.31			8.37		10.45		12.51		14.63		16.85		19.06									
		Kg	20550			15230		11980		9630		8040		6730		5730									
	3SL	m		7.51				10.06		12.62		-	15.17												
		Kg		18460				13740		10930		-	8640												
	4SL	m		7.70				10.21		12.37		-	15.36		18.01										
		Kg		17030				12640		10010			7870		6380										
	4SLK	m		7.69				10.24		12.8			15.35		18										
		Kg		17140				12730		10090			8170		6640										
HLRM 170	2S	m	5.64		7.64		9.54																		
		Kg	27950		18200		13440																		
	3S	m	5.88		7.95			10.01		12.08															
		Kg	26310		19620			14480		11360															
	4S	m	6.09			8.15		10.22		12.29		14.32													
		Kg	25200			18830		14980		12130		10030													
	3SL	m		7.97				10.03		12.11		14.17													
		Kg		19220				12250		9780															
	4SL	m				8.16		10.22		12.3		14.36		16.39											
		Kg				18450		14630		11620		9230		7700											
HLRM 200	2SL	m		7.98			9.75		11.93																
		Kg		22350			17450		14300																
	3SL	m		7.6			9.77		11.94			14.1													
		Kg		21950			17050		13900		11800														
	4SL	m		7.82			9.89			12.16		14.32		16.37											
		Kg		20750			16050			13050		11000		9600											
	18-4SL	m				8.49			10.84			13.20		15.55		18.05									
		Kg				22430			17170			13700		10570		8540									
	20-4SL	m						9.85			12.4		14.96			17.51			20.01						
		Kg						18450			14230		11540			9270			7820						
HLRM 230	4SL	m				7.38		9.67		11.97			14.26		16.46										
		Kg				30300		22800		17740			13780		11330										
	4SLK	m				7.44		9.73			12.03		14.32		16.52										
		Kg				28360		21350			17020		14140		12180										

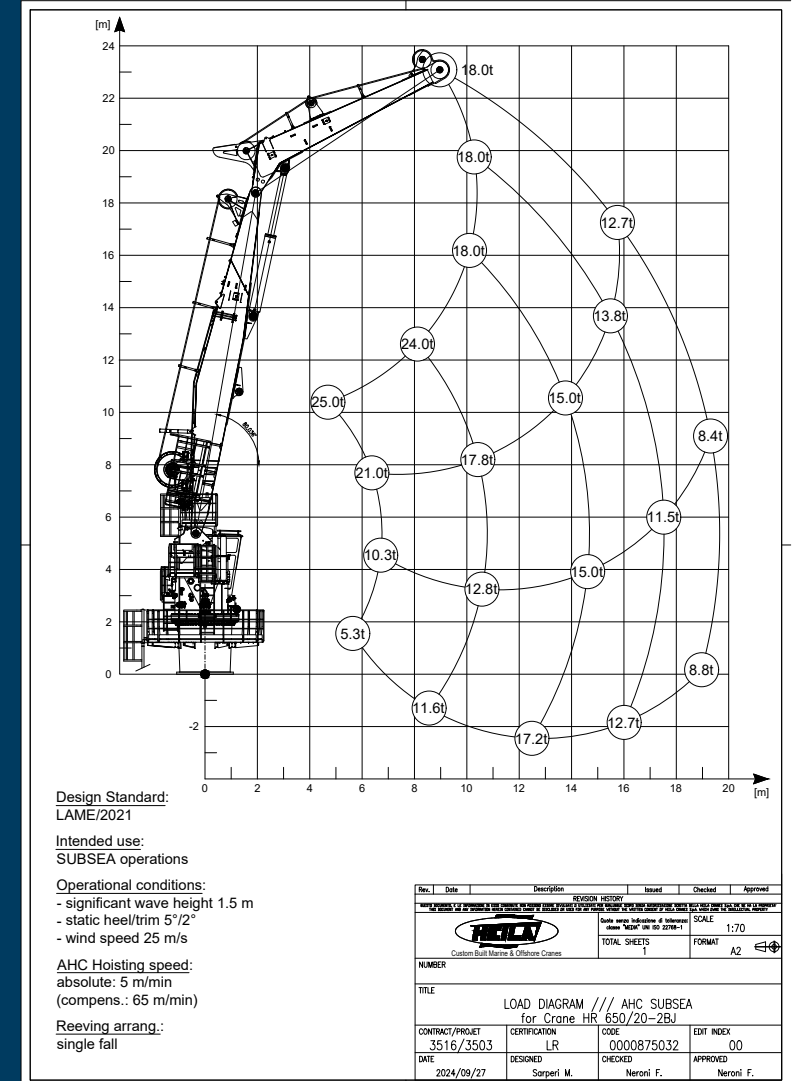
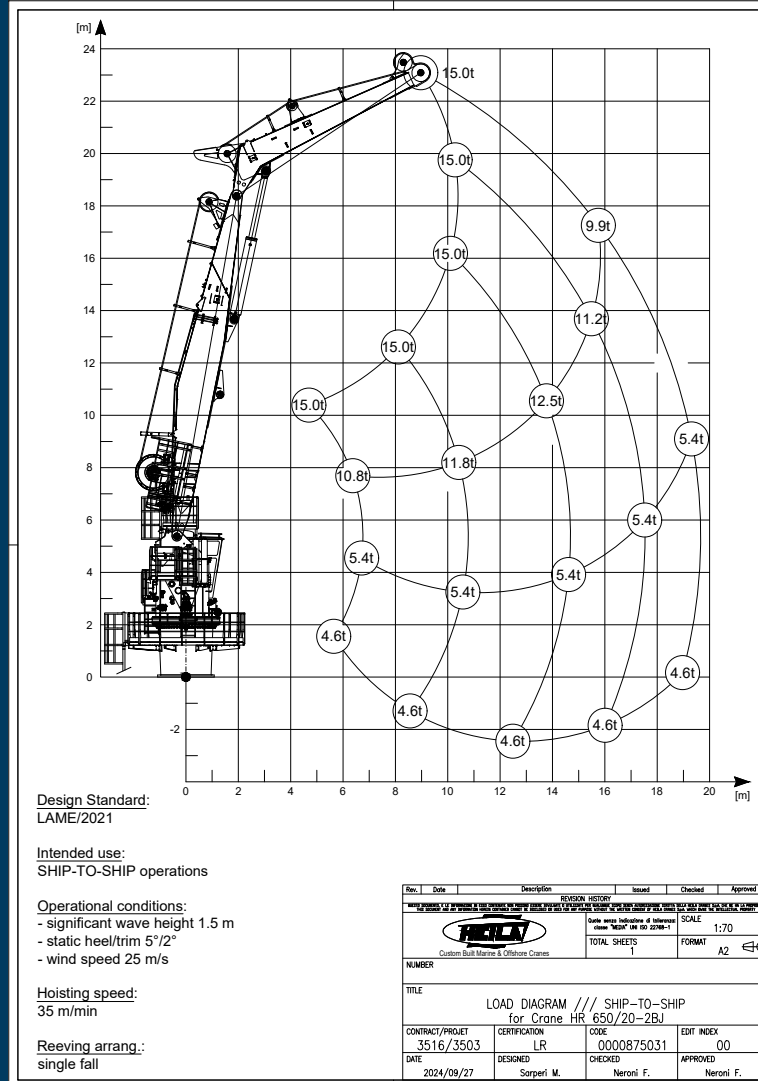
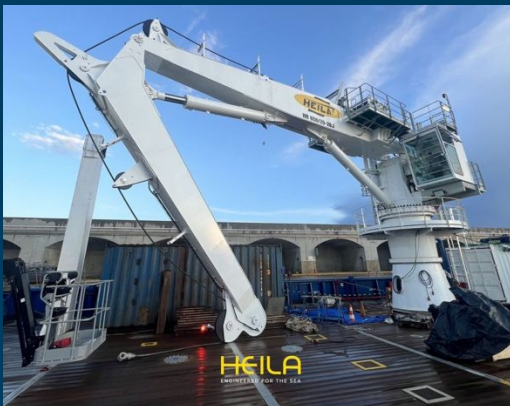


Data in the table are for harbour conditions
Horizontal loads, lifting by hook in harbour conditions
For the minimum outreach, please check the technical

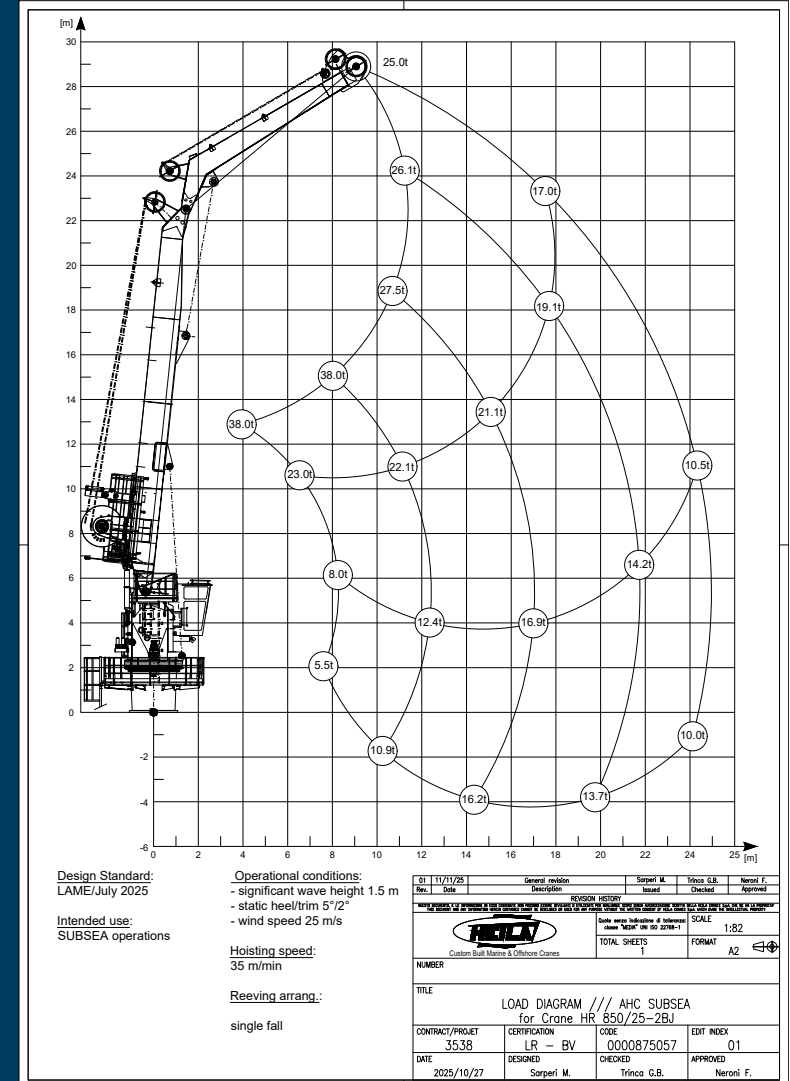
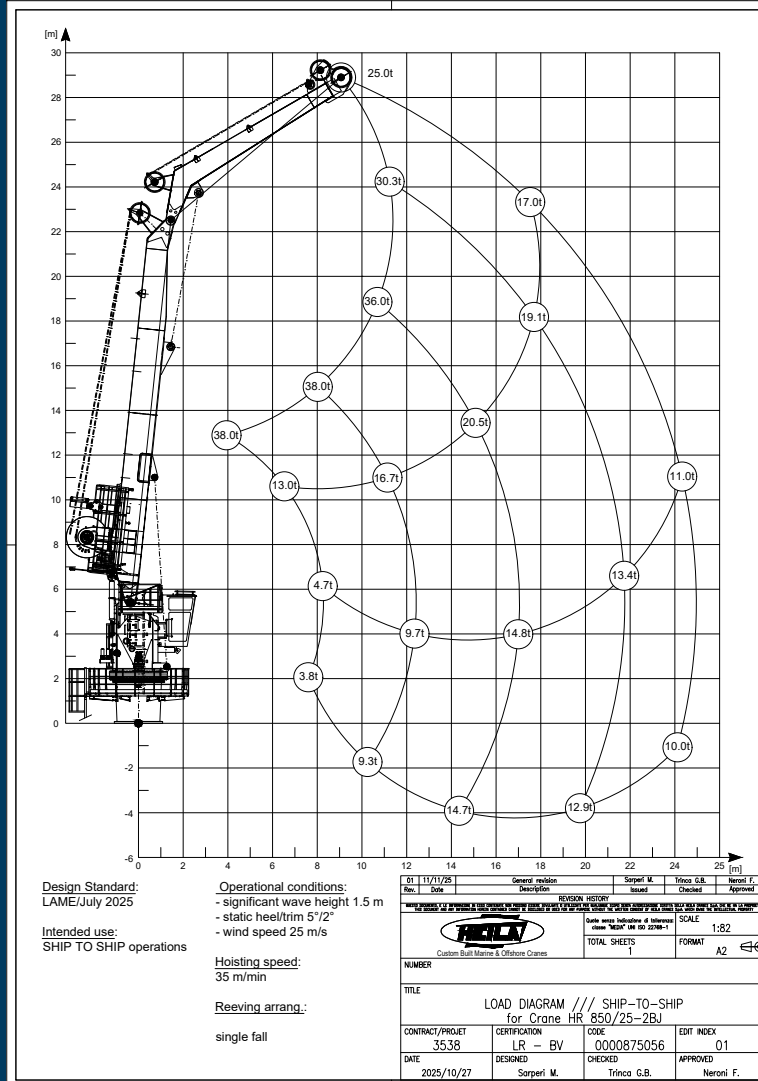
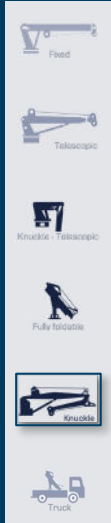
Crane model	nr of extensions	Length of boom (m) and crane lifting capacity (kg) HEILA Cranes STANDARD Products Table																								Revision – 1 Juni 2024									
		5m	6m	8m	9m	10m	11m	12m	13m	14m	15m	16m	17m	18m	19m	20m	21m	22m	23m	24m	25m	26m	27m	28m											
HLRM 280	2SL	m			9.08			12.08			15.08																								
		Kg			31.100			22.700			16.500																								
	3SL	m			9.48			12.48			15.48			18.48																					
		Kg			28.800			20.950			14.890			11.340																					
	4SL	m			9.88			12.88			15.88			18.88				21.88																	
		Kg			26.680			19.290			13.370			10.000				7.970																	
HLRM 340	1S	m			9.61			12.17																											
		Kg			20.000			20.000																											
	2S	m		8.69			11.25			14.09																									
		Kg		26.000			20.000			15.000																									
	3SL	m			9.57			12.47			15.47			18.47																					
		Kg			32.500			24.000			18.000			13.900																					
HLRM 440	2S	m		8.69			11.25			14.09																									
		Kg		37.000			27.100			20.500																									
	3S	m			9.07		11.63			14.47			17.31																						
		Kg			35.000		26.000			18.500			14.400																						
	4S	m	5.71		9.54			12.09		14.47			17.69			20.60																			
		Kg	55.000		44.900			28.500		18.500			15.200			12.300																			
HLRM 460	5S	m		9.54			12.09		14.84			17.69			20.60				23.25																
		Kg		43.600			27.700		19.200			14.600			11.800				10.439																
	2S	m				10.82			13.67			16.72																							
		Kg				36.000			26.500			20.000																							
	3S	m				10.98				14.03			17.08			20.13																			
		Kg				32.000				23.000			18.000			15.900																			
HLRM 580	4S	m				10.98				14.03			17.08			20.13				23.15															
		Kg				31.100				22.300			17.500			14.600				13.000															
	1S	m																																	
		Kg																																	
	2S	m		6.32			10.59			13.63			16.70																						
		Kg		65.000			45.500			33.800			26.800																						
HLRM 1000	3S	m				10.98				14.03			17.08			20.13																			
		Kg				40.900				30.100			23.600			18.900																			
	4S	m					12.80			15.85			18.90			21.95				25.00															
		Kg					25.000			20.900			16.000			12.500				10.000															
	5S	m				11.79			14.83			17.88			20.93			23.98					27.03												
		Kg				35.200			26.200			20.500			16.200			13.700					11.700												
HLRM 1500	2S	m						12.03		14.63			17.23																						
		Kg						70.000		56.000			47.000																						
	3S	m						12.51			15.11			17.71		20.31																			
		Kg						62.500			49.500			41.500		35.500																			
	4S	m						12.86			15.56			18.16			21.76		23.46																
		Kg						57.000			44.500			37.500			31.500		26.500																
HLRM 1500	5S	m						13.44			16.04			18.64			21.24		23.94			26.64													
		Kg						52.500			41.500			34.000			28.500		23.100			19.800													
	6S	m							16.55				19.15			21.75			24.45			27.15	29.85												
		Kg							33.200				26.400			21.700			17.800			15.300	13.500												
	2S	m					11.00		13.20		15.80																								
		Kg					83.000		69.950		56.128			47.23			39.800		32.900			27.000													
6S	m								15.20			17.23		19.80			22.03			25.23		27.00													
	Kg								41.200			32.800		26.970			22.000			19.000		16.800													



D HR650/20-2BJ: Offshore Subsea Foldable Knuckle telescopic cranes



E HR850/20-2BJ: Offshore Subsea Foldable Knuckle telescopic cranes





Applications:



Applications:



Applications:

