

## THE FOLDABLE TELESCOPIC CRANES EXPERTS



*Exclusive Agents in Greece & Cyprus*



Fixed



Telescopic



Knuckle - Telescopic



Fully foldable



Knuckle



Truck



Our cranes are synonymous with safety, soundness, compactness, light weight and low operation costs.

#### HEILA CRANES GROUP:

Heila Cranes SpA in Italy

Heila Cranes Nederland BV in The Netherlands

#### HIGHLIGHTS:

- ▶ Over 45 years of experience
- ▶ Over 5,500 marine cranes engineered and manufactured
- ▶ 220 cranes certified by class in the recent years
- ▶ Outstanding in-house engineering capability



#### Focus on our customer

Heila cranes focuses on establishing long-term relationships with its customers, proactiveness, and technical reliability. With energy and passion. In practice this means engineering and manufacturing the most reliable custom-built marine and offshore cranes, with capacities ranging from 3 up to 1,500 tm. Always in cooperation with our customers. Always striving to find the best solution.

#### MISSION

We supply the most reliable cranes to our customers in the marine and offshore industry. We aim to satisfy their every need with respect to deck cranes among our range.

"Quality, reliability and service are Heila's unique selling points. The company has gathered together a group of true professionals who are reliable and skilled"

*Neptune Shipyard BV*

"We prefer quality cranes for our vessels and value at the same time a good understanding and relationship with our suppliers. No problem for Heila: our long-term cooperation with Heila proves this. The new Heila will emerge"

*Damen Shipyards, Hardinxveld*

#### FOUNDED IN ITALY, WITH WORLDWIDE PRESENCE

Heila Cranes has service, sales and dealer hubs throughout the world. This makes it possible to provide our customers with an optimal service. Check our website for a Heila representative in your area.







### A



**HLM CRANES**  
From 500 Kg to 4.7 tons  
From 3 to 14 meters



### B



**HLRM CRANES**  
25 to 90  
From 880 Kg to 17.07 tons  
From 4 to 21 meters



### C



**HLRM CRANES**  
80 to 1500  
From 4.4 to 83 tons  
From 5 to 29 meters



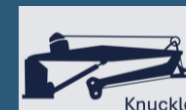
### D



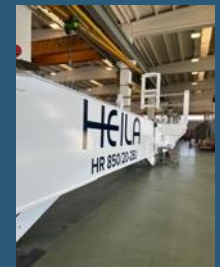
**HR650/20-2BJ**  
From 4.6 to 25 tons  
From 4.5 to 19.5 meters



### E



**HR850/20-2BJ**  
From 3.8 to 38 tons  
From 4 to 24.5 meters



# A

## HLM CRANES:

### Fully foldable telescopic cranes with rack and pinion slewing system



HLM 25/3S

The HLM cranes with their rack and pinion slewing system are very compact and light. This makes the HLM type ideal for use on small vessels, especially where space is limited. Cranes of this type, our 'workhorses of the sea', are indispensable for auxiliary vessels including multifunctional work boats, tugs and pontoons.

#### CHARACTERISTICS

- The crane is able to work in any configuration; with boom extended upwards or folded downwards offering great manoeuvrability
- Rotation up to 360°. This is possible because the crane is fitted with a double rack and pinion system with bronze bushes that guarantees safe operation, even at higher heel and trim angles.

#### CONTROL AND SAFETY

- Stationary fixed control console
- Counterbalance valves directly mounted on each cylinder provide a fast response
- Proportional Electrohydraulic Control Valve Block with internal compensation for simultaneous movements and self-centring manual levers; supplied by primary world-wide producers
- Electrohydraulic load moment limiting device; prevents the crane being overloaded and damaged.

#### STRONG AND RELIABLE

Doubling the number of racks and cylinders doubles the power of the slewing system. Moreover, the life of these components is extended because the load is shared.

#### CUSTOMISATION

The HLM crane series is standardised, however, there are a surprising number of options allowing a full customisation.

#### HORIZONTAL LOAD HLM CRANES

Crane model	nr of extensions	Length of boom (m) and crane lifting capacity (kg)										HEILA Cranes STANDARD Products Table		Revision - 1 Juni 2024			
		3 m	4 m	5 m	6 m	7 m	8 m	9 m	10 m	11 m	12 m	13 m	14 m				
HLM 3	1 m	3.51		5.18													
	3 Kg	1.110		750													
	2 m	3.62		5.29	6.86												
	3 Kg	1.030		680	500												
HLM 6	1 m	3.54		5.25													
	3 Kg	1.210		1.160													
	2 m	3.66		5.33		7.00											
	3 Kg	1.480		1.000		760											
HLM 8	3 m	3.60		5.24	6.86		8.62										
	3 Kg	1.390		910	670		530										
HLM 10	1 m		4.17	5.82													
	3 Kg		2.330	1.680													
	2 m		4.25	5.85		7.43											
	3 Kg		2.110	1.520		1.200											
HLM 16	3 m		4.34	5.96		7.60		9.27									
	3 Kg		1.780	1.250		950		770									
HLM 25	1 m		4.64		6.54												
	3 Kg		2.310		1.650												
	2 m		4.69		6.55		8.41										
	3 Kg		2.280		1.620		1.260										
HLM 32	3 m		4.80		6.65		8.51		10.30								
	3 Kg		2.120		1.440		1.140		940								
HLM 40	1 m		4.94		6.94												
	3 Kg		3.440		2.460												
HLM 50	2 m		4.96			7.02		9.03									
	3 Kg		3.350			2.190		1810									
HLM 63	3 m			5.01		7.01		9.01		11.00							
	3 Kg			3.090		2.150		1.640		1.330							
HLM 80	2 m		4.68		6.65		8.62										
	3 Kg		3.170		3.640		2.820										
HLM 100	3 m		4.81		6.76		8.73		10.58								
	3 Kg		4.840		3.470		2.660		2.200								
HLM 125	4 m		4.94		6.89		8.86		10.72		12.64						
	3 Kg		4.700		3.280		2.490		2.020		1.710						
HLM 160	5 m			5.04	6.99		8.96				12.82		14.72				
	3 Kg			4.520	3.100		2.320				1.450		1.200				



#### Data in the table are for harbour conditions

Horizontal loads, lifting by hook in harbour conditions. For the minimum outreach, please check the technical data sheet. HLM cranes can also work offshore.

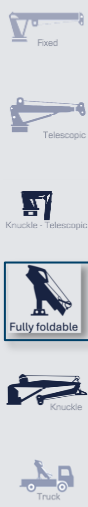
#### Features:

- Originally designed for a marine environment
- One (1) cylinder for multiple telescopic movements
- Designed for easy maintenance
- High degree of customisation
- Cranes equipped with winch is possible, please contact our sales department



B

## HLRM CRANES (HLRM25 to HLRM 90): Fully foldable telescopic cranes with slewing bearing system



Crane model	nr of extensions	Length of boom (m) and crane lifting capacity (kg)																		HEILA Cranes STANDARD Products Table										Revision – 1 Juni 2024																																																																																																																																																																																																																																																																																																																																																																																																																																																																																																																																																																																																																																																																																																																																																																																																																																																																																																																																																																																																																																																																																																																																																																																																																																																																																																																																																																																								
		4m	5m	6m	7m	8m	9m	10m	11m	12m	13m	14m	15m	16m	17m	18m	19m	20m	21m																																																																																																																																																																																																																																																																																																																																																																																																																																																																																																																																																																																																																																																																																																																																																																																																																																																																																																																																																																																																																																																																																																																																																																																																																																																																																																																																																																																																			



Data in the table are for harbour conditions  
Horizontal loads, lifting by hook in harbour conditions  
For the minimum outreach, please check the technical data sheet.

- Features:**
- Originally designed for a marine environment
  - Continuous slewing
  - Designed for easy maintenance
  - High grade of customisation
  - Cranes equipped with winch is possible, please contact our sales department

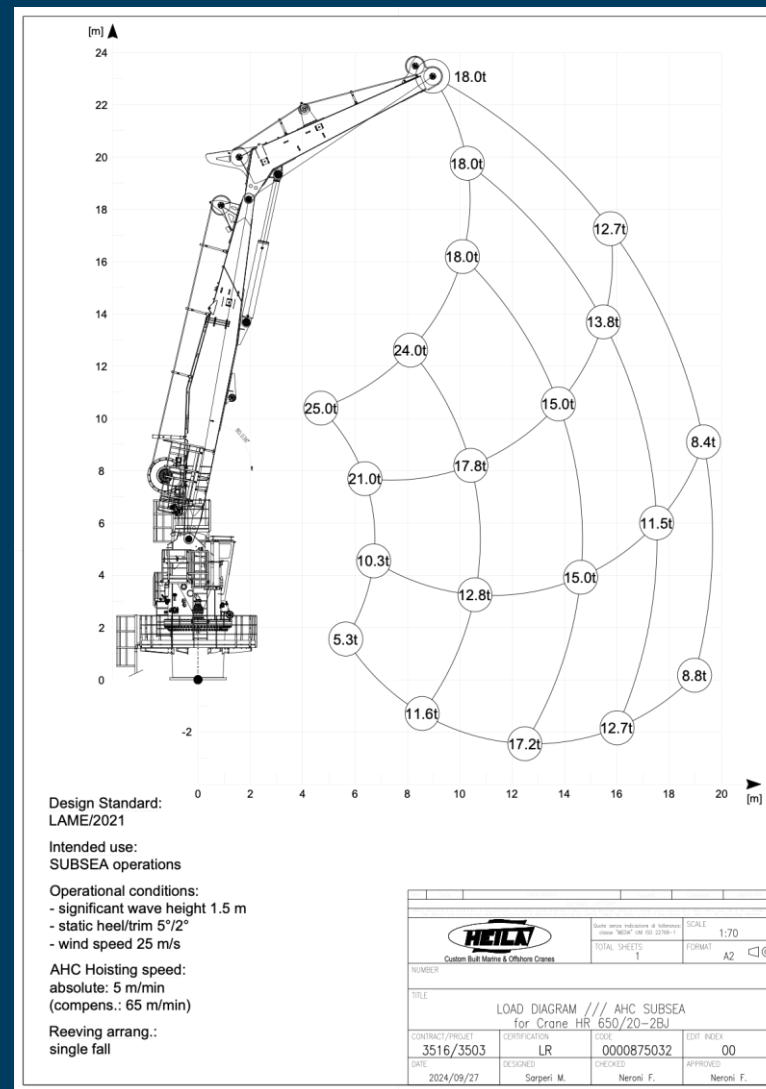
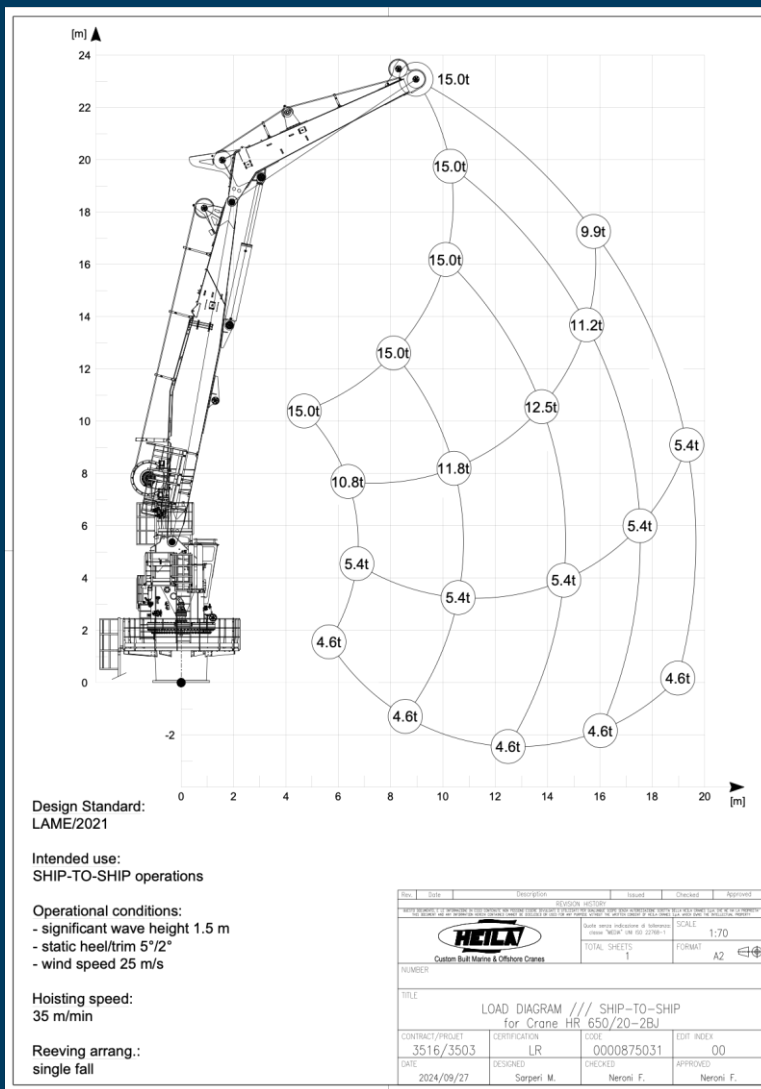
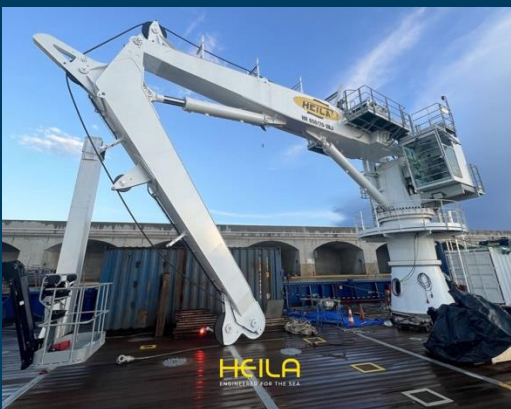


Crane model	nr of extensions	Length of boom (m) and crane lifting capacity (kg)																		HEILA Cranes STANDARD Products Table										Revision – 1 Juni 2024																																																																																																																																																																																																																																																																																																																																																																																																																																																																																																																																																																																																																																																																																																																																																																																																																																																																																																																																																																																																																																																																																																																																																																																																																																																																			
		4m	5m	6m	7m	8m	9m	10m	11m	12m	13m	14m	15m	16m	17m	18m	19m	20m	21m																																																																																																																																																																																																																																																																																																																																																																																																																																																																																																																																																																																																																																																																																																																																																																																																																																																																																																																																																																																																																																																																																																																																																																																																																																																																														

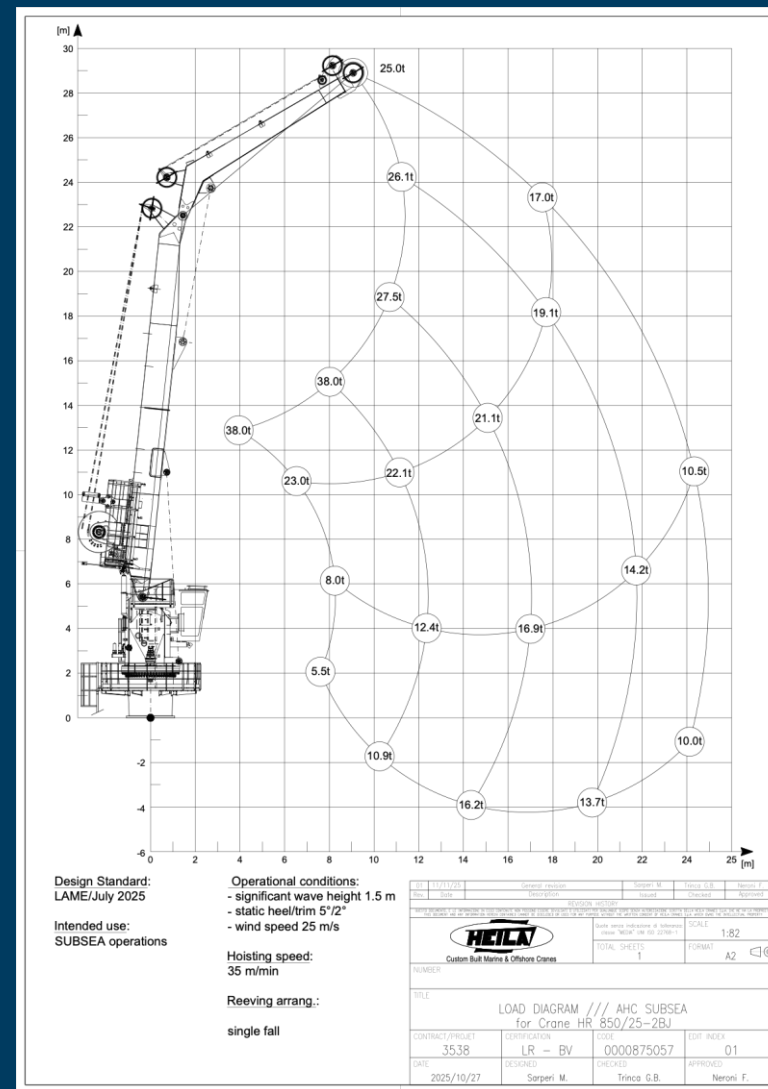
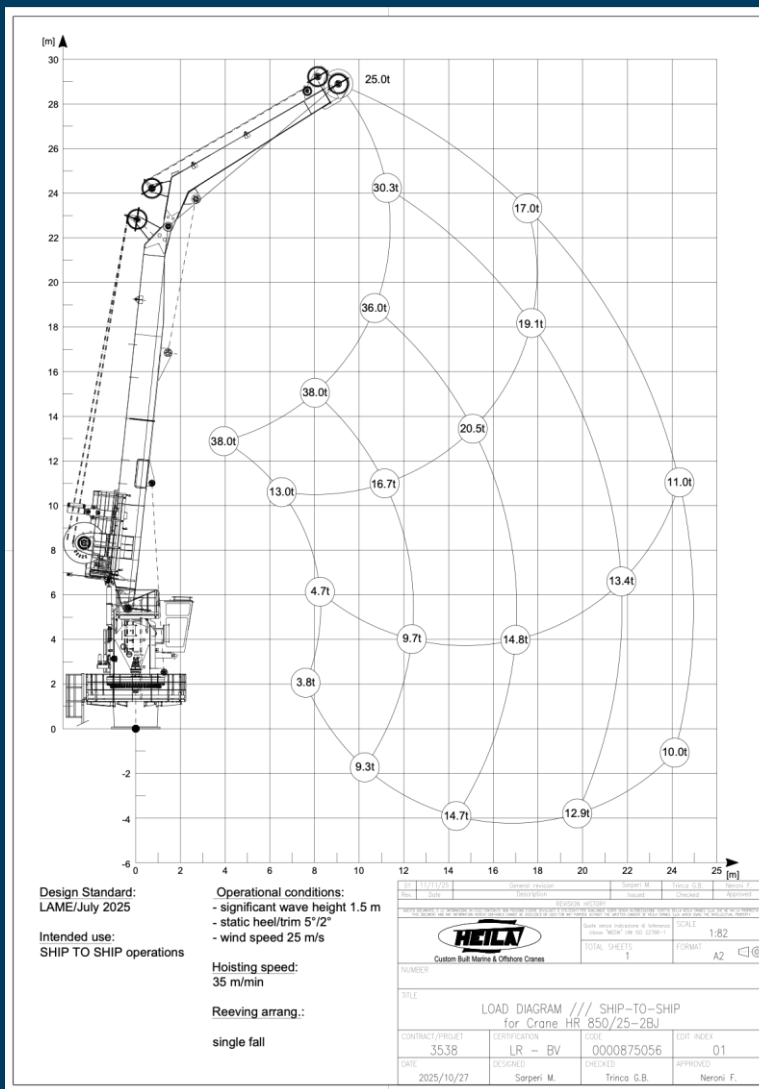
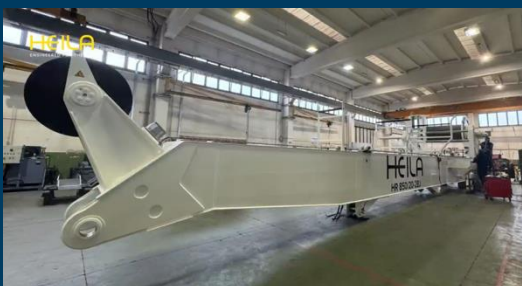
## Foldable Knuckle telescopic cranes with slewing bearing system



### HR650/20-2BJ: Offshore Subsea Foldable Knuckle telescopic cranes



### HR850/20-2BJ: Offshore Subsea Foldable Knuckle telescopic cranes





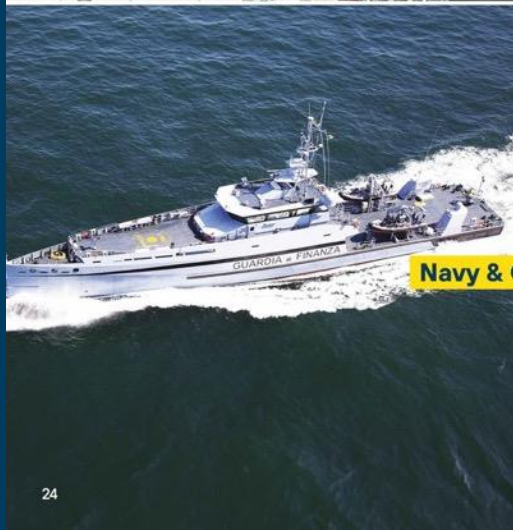
**HEILA**  
ENGINEERED FOR THE SEA

### Cranes applications in the Marine and Offshore Industry.

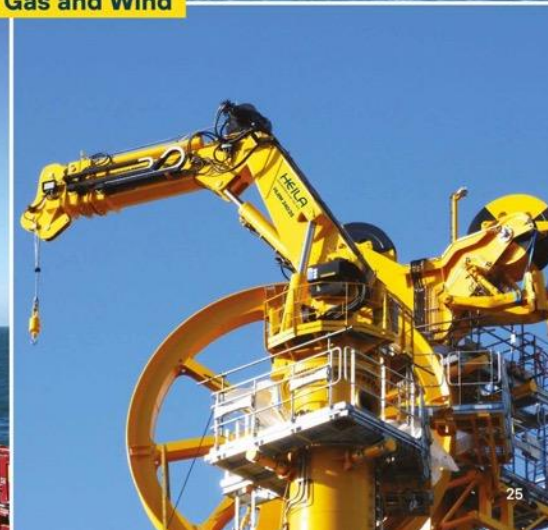
#### Oceanographic Research Vessels



#### Offshore Oil & Gas and Wind



#### Navy & Coast Guard



24

25









**HLRM 1000**  
Engineered for the Sea



Maximum lifting, minimal footprint.  
The queen of subsea operations.



**HLRM 140**  
Engineered for the Sea



Versatile. Lightweight. Compact.

HLRM 140 SERIES

**HEILA**  
ENGINEERED FOR THE SEA